

REKSIS Model TREKS

FLAT TABLE CNC WORKING CENTER



GENERAL FEATURES :

CNC Working Centres capable to carry out wooden or similar materials machining.

Base and working table :

Structure made of welded steel plates of rectangular section, with multifunction aluminium worktable and single area. Gantry structure, made of welded steel plates of rectangular section which supports the main operating group.

Operating Unit :

Consisting in boring head as an option with vertical/horizontal spindles and integrated blade, plus electrospindle with HSK63F rapid tool changer.

Differences :

Thanks to Bigger body with longer Z Axes Stroke, We can add unloader unit with cleaning bench. We can put toolchanger under the bridge. It saves times when machine during toolchanger. With more powerfull Servo motors and drives. Machine can reach 80 meter / min speed. Bigger Spindle motor.



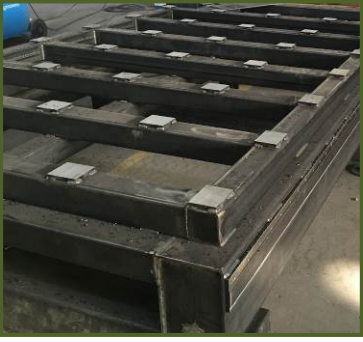
TREKS WITH DRILLING OPTION

USER FRIENDLY MACHINE



The three different color of led surrouding machine body and its changing color according to machine status. Green : Machine is Working, Yellow : Waiting command., Red : in Error

HEAVY DUTY BASEMENT



We are making heavy duty base.



With our metalworking machines in Our factory

WORKING SPEED :

X and Y Axes	: 80 m/min.
Z Axes	: 20 m/min.

DRIVERS AND MOTORS :

X Axes	: 2 x 1.7 Kw.
Y Axes	: 1 x 1.7 Kw.
Z Axes	: 1 x 1.1 Kw With Brake.

Brand is TPA (ITALY)



SPINDLE MOTOR :

Brand	: HSD (ITALYA) or PDS by Hiteco (GERMANY)
Power	: 9 Kw (Optional 12 Kw)
Maximum Rpm	: 24.000 d/dk

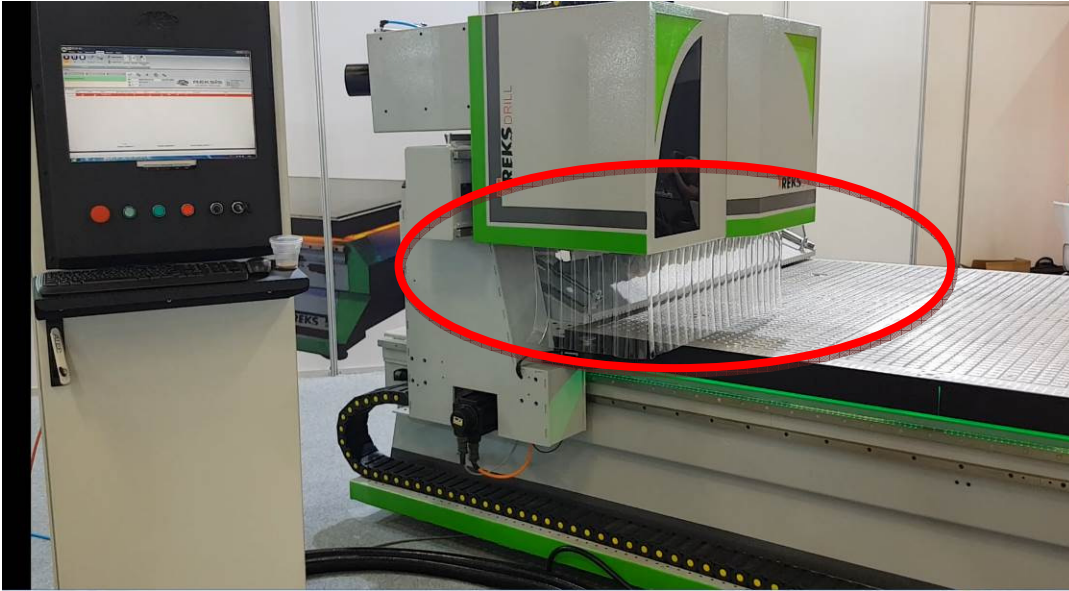
TOOLCHANGER :

NR 12 Toolchanger is under the bridge and moving x axes of the machine.

Mounted Under the bridge.



AUTOMATIC UNLOADER UNIT (OPTIONAL) :



VACUUM :

510 mt3 / Hour trubune type.



AUTOMATIC TOOL MEASUREMENT :

Automatic Measurement with X Axes.



Some Pictures :



